



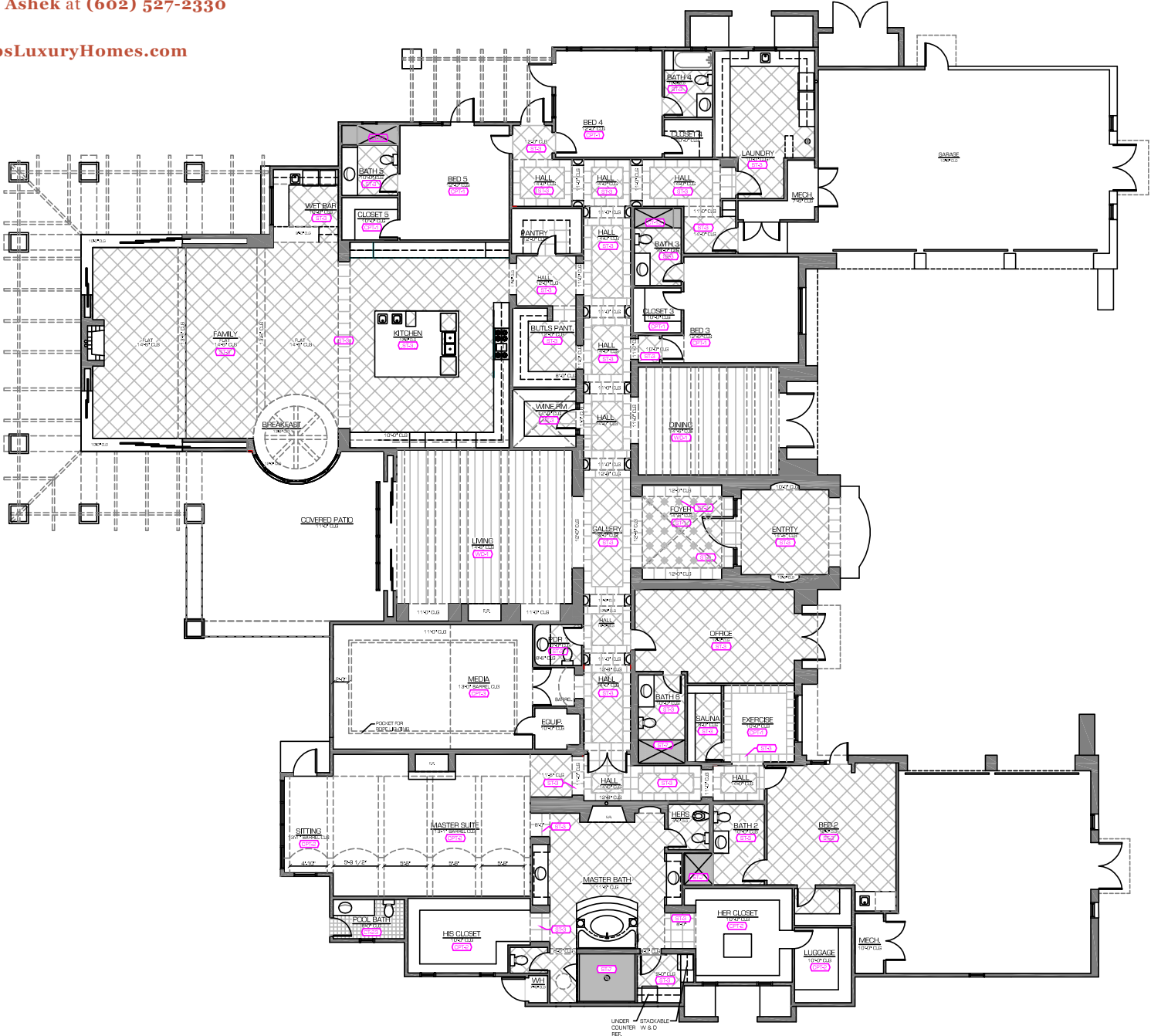
# Maverick

6310 E. Maverick Road, Paradise Valley, AZ

An exquisite Phillips Luxury Homes residence

For information on this home or investment opportunities, contact **Tony Ashek** at **(602) 527-2330**

[www.PhillipsLuxuryHomes.com](http://www.PhillipsLuxuryHomes.com)





# Maverick

6310 E. Maverick Road, Paradise Valley, AZ

An exquisite Phillips Luxury Homes residence

For information on this home or investment opportunities,  
contact **Tony Ashek** at **(602) 527-2330**

[www.PhillipsLuxuryHomes.com](http://www.PhillipsLuxuryHomes.com)



Style:	Mediterranean
Square Feet:	11,046 sq ft
Lot Size:	1.0 acres
Bedrooms:	5
Bathrooms:	5
Price:	\$6,500,000
Construction Started:	July 2007
Construction Completed:	April 2008